

# SUMMIT INTERMEDIATE SCHOOL BANDS

## Rhythm Drills



*By Jonathan M. Peske*

## How to practice these drills:

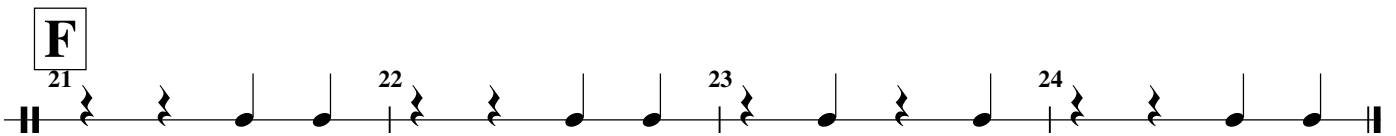
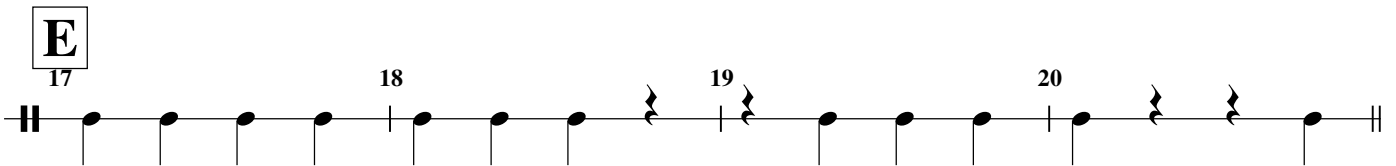
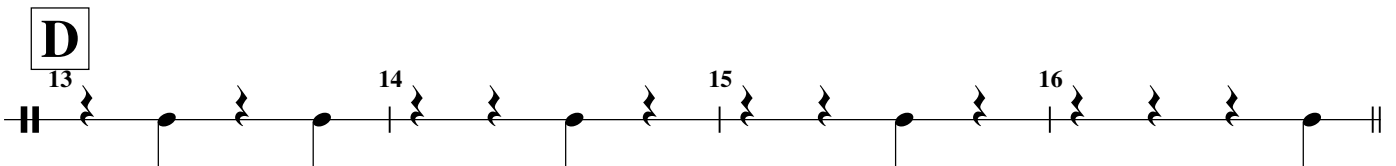
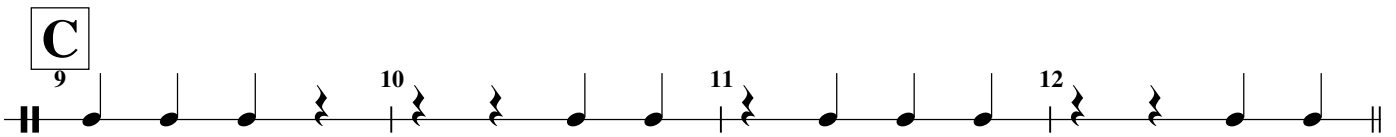
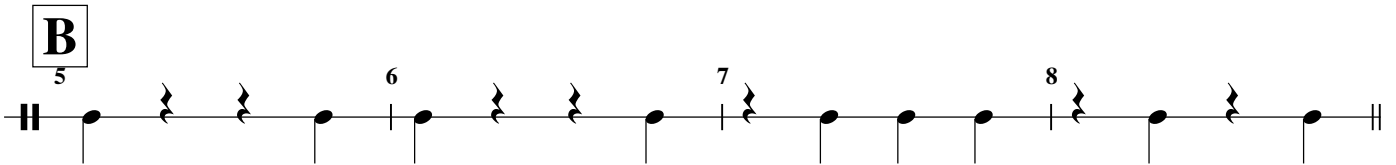
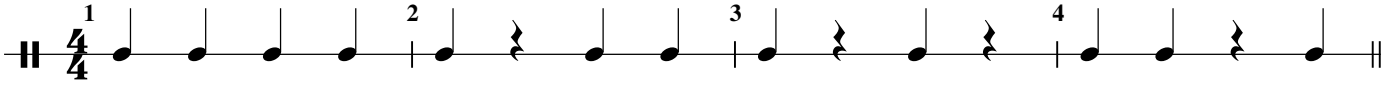
- Practice each measure individually first.
  - Then work on the entire line.
  - Then try to do more than one line.
  - How far can you play without making a mistake?
- **Use a metronome!** Each drill has a metronome marking. If that feels too fast, you can always go slower. Use the online metronome, or one of your own.
- Your goal is to be extremely precise. Don't just get it "close," get it perfectly right. Try for 3 times in a row perfectly correct. Perfect practice makes perfect.
- Write in counting for the rhythms—where are counts 1, 2, 3, 4?
- Practice counting and clapping the rhythms.
- Listen to the exercises performed by the computer online at [www.sisbands.org/Rhythm.htm](http://www.sisbands.org/Rhythm.htm)
- Be sure to hold notes for full value and count carefully through rests.
- Once you feel you really know it, move the metronome to a faster tempo—can you still play it perfectly?
- Try playing the rhythm on the page, but with changing notes. This is a way to improvise. Can you pick notes so that the line of rhythm sounds like a logical melody?
- With a friend: Each person picks a different line and you both play your lines at the same time. Can you play yours right when you hear other rhythms?
- Spend a few minutes every day working on rhythm—it will make you a better player!

# 1

## Rhythm Drills Quarter Notes and Quarter Rests

$\text{♩} = 100$

**A** Set a metronome so that you play with a steady beat.



# 2

## Rhythm Drills Quarter Notes, Two Eighths, Quarter Rests

♩=100

**A** Set a metronome so that you play with a steady beat.

1 2 3 4

**B**

5 6 7 8

**C**

9 10 11 12

**D**

13 14 15 16

**E**

17 18 19 20

**F**

21 22 23 24

# 3

## Rhythm Drills

Mixed Quarter, Half, Whole notes, Ties, Rests

♩=100

**A** Count carefully! Be sure to hold notes full value.

1 2 3 4

**B**

5 6 7 8

**C**

9 10 11 12

**D**

13 14 15 16

**E**

17 18 19 20

**F**

21 22 23 24

# 4

## Rhythm Drills

2/4, 3/4, 5/4 time signatures

**A** ♩=100  
Watch out for time signature changes!

1 2 3 4

5 6 7 8

9 10 11 12

1 2 + 3

13 14 15 16

17 18 19 20

21 22 23 24

1 + 2 3 + 4 + 5

# 5

## Rhythm Drills

### Dotted Quarter Notes

**A** ♩=100  
Set a metronome so that you play with a steady beat.

1 2 + 3 4 | 1 2 + 3 4 | 1 2 + 3 4 | 1 2 + 3 4

**B**

5 6 7 8

**C**

9 10 11 12

**D**

13 14 15 16

**E**

Count the ties carefully.

17 18 19 20

**F**

Notice the meter change.

21 22 23 24

# 6

## Rhythm Drills

Eighth notes on and off the beat

**A** You need to look very carefully at where each beat is. Does the note fall ON the beat, or OFF the beat? ♩=80

### B

### C

Careful!

### D

### E

### F



# 7

## Rhythm Drills

### Basic Syncopation

**A** ♩=90

Set a metronome so that you play with a steady beat.

1 2 3 4

**B**

5 6 7 8

**C**

9 10 11 12

**D**

13 14 15 16

1 +2 + 3 4

**E**

17 18 19 20

**F**

Careful!

21 22 23 24

**G**

25 26 27 28

# 8

## Rhythm Drills

### Review

**A**  $\text{♩} = 100$   
Set a metronome so that you play with a steady beat.

1 2 3 4

**B**

5 6 7 8

**C**

9 10 11 12

**D** Notice the time signature change. Watch out for another one....

13 14 15 16

**E**

17 18 19 20

**F**

21 22 23 24

# 9

## Rhythm Drills

### Triplets

♩=75

**A** Set a metronome so that you play with a steady beat.

1 tri po let 3 4

**B**

**C**

**D**

Notice the ties.

**E**

Remember that 2 eighth notes equal one quarter note.

**F**

# 10

## Rhythm Drills

Cut Time

**A**  $\text{♩} = 80$   
In cut time, the half note gets the beat and there are two beats in the measure.

1 2 1 + 2

**B**

5 6 7 8

**C**

9 10 11 12

**D**

13 14 15 16

**E**

17 18 19 20

**F**

21 22 23 24

# 11

## Rhythm Drills

6/8 time

♩ = 65

**A** In 6/8, the eighth note gets the number, but the beats are subdivided in groups of three, so it feels like triplets.

**B**

**C**

**D**

**E**

**F** Careful!

**G**

# 12

## Rhythm Drills Basic Sixteenth Note patterns

♩=70

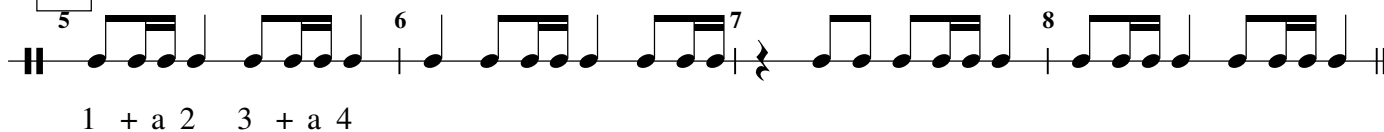
**A** Set a metronome so that you play with a steady beat.



1 2 e + a 3

Drill A consists of four measures in 4/4 time. Measure 1 starts with a quarter rest, followed by a quarter note, then a pair of eighth notes, and ends with a quarter rest. Measure 2 contains a pair of eighth notes, followed by a pair of eighth notes, then a pair of eighth notes, and ends with a quarter rest. Measure 3 contains a quarter note, followed by a pair of eighth notes, then a pair of eighth notes, and ends with a quarter rest. Measure 4 contains a pair of eighth notes, followed by a pair of eighth notes, then a pair of eighth notes, and ends with a quarter rest.

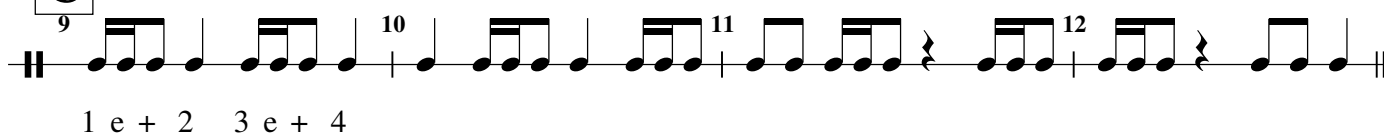
**B**



1 + a 2 3 + a 4

Drill B consists of four measures in 4/4 time. Measure 5 starts with a quarter note, followed by a pair of eighth notes, then a pair of eighth notes, and ends with a quarter rest. Measure 6 contains a pair of eighth notes, followed by a pair of eighth notes, then a pair of eighth notes, and ends with a quarter rest. Measure 7 contains a pair of eighth notes, followed by a pair of eighth notes, then a pair of eighth notes, and ends with a quarter rest. Measure 8 contains a pair of eighth notes, followed by a pair of eighth notes, then a pair of eighth notes, and ends with a quarter rest.

**C**



1 e + 2 3 e + 4

Drill C consists of four measures in 4/4 time. Measure 9 starts with a pair of eighth notes, followed by a pair of eighth notes, then a pair of eighth notes, and ends with a quarter rest. Measure 10 contains a pair of eighth notes, followed by a pair of eighth notes, then a pair of eighth notes, and ends with a quarter rest. Measure 11 contains a pair of eighth notes, followed by a pair of eighth notes, then a pair of eighth notes, and ends with a quarter rest. Measure 12 contains a pair of eighth notes, followed by a pair of eighth notes, then a pair of eighth notes, and ends with a quarter rest.

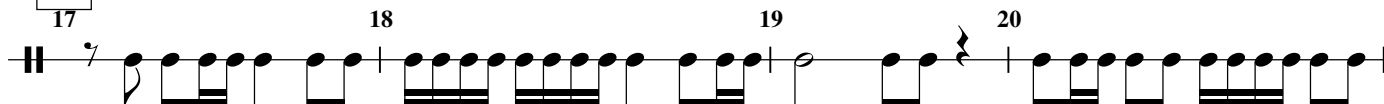
**D**

Careful!



Drill D consists of four measures in 4/4 time. Measure 13 starts with a pair of eighth notes, followed by a pair of eighth notes, then a pair of eighth notes, and ends with a quarter rest. Measure 14 contains a pair of eighth notes, followed by a pair of eighth notes, then a pair of eighth notes, and ends with a quarter rest. Measure 15 contains a pair of eighth notes, followed by a pair of eighth notes, then a pair of eighth notes, and ends with a quarter rest. Measure 16 contains a pair of eighth notes, followed by a pair of eighth notes, then a pair of eighth notes, and ends with a quarter rest.

**E**



Drill E consists of four measures in 4/4 time. Measure 17 starts with a quarter rest, followed by a pair of eighth notes, then a pair of eighth notes, and ends with a quarter rest. Measure 18 contains a pair of eighth notes, followed by a pair of eighth notes, then a pair of eighth notes, and ends with a quarter rest. Measure 19 contains a pair of eighth notes, followed by a pair of eighth notes, then a pair of eighth notes, and ends with a quarter rest. Measure 20 contains a pair of eighth notes, followed by a pair of eighth notes, then a pair of eighth notes, and ends with a quarter rest.

**F**



Drill F consists of four measures in 4/4 time. Measure 21 starts with a pair of eighth notes, followed by a pair of eighth notes, then a pair of eighth notes, and ends with a quarter rest. Measure 22 contains a pair of eighth notes, followed by a pair of eighth notes, then a pair of eighth notes, and ends with a quarter rest. Measure 23 contains a pair of eighth notes, followed by a pair of eighth notes, then a pair of eighth notes, and ends with a quarter rest. Measure 24 contains a pair of eighth notes, followed by a pair of eighth notes, then a pair of eighth notes, and ends with a quarter rest.

# 13

## Rhythm Drills The Dotted Eighth-Sixteenth Note Pattern

Give the dotted rhythm energy by putting a small space before the sixteenth.  
Make sure there is a difference between the dotted eighth notes and the straight eighth notes.

**A** ♩=80

1 2 a 3

**B**

**C**

**D**

**E** Here is the pattern reversed:

1 2 e 3 4 e

**F** Be very careful!

# 14

## Rhythm Drills

### Mixed Review

**A** ♩=85  
Count carefully! Set a metronome so that you play with a steady beat.

**B**

**C**

**D** Watch out for time changes.

**E** Keep the tempo the same through the meter changes.

**F**



# 15

## Rhythm Drills

Cut Time

$\text{♩} = 85$

**A** Remember that the half note gets the beat.

Rhythm drill A consists of four measures. Measure 1 starts with a common time signature (C) and contains four quarter notes. Measure 2 contains four eighth notes. Measure 3 contains four quarter notes. Measure 4 contains two half notes.

**B**

Rhythm drill B consists of four measures. Measure 5 starts with a common time signature (C) and contains four quarter notes. Measure 6 contains a half note followed by two quarter notes. Measure 7 contains a quarter note followed by two quarter notes. Measure 8 contains a quarter note followed by two quarter notes.

**C**

Rhythm drill C consists of four measures. Measure 9 starts with a common time signature (C) and contains four quarter notes. Measure 10 contains a half note followed by two quarter notes. Measure 11 contains a quarter note followed by two quarter notes. Measure 12 contains a half note followed by two quarter notes.

**D**

Rhythm drill D consists of four measures. Measure 13 starts with a common time signature (C) and contains a half note followed by two quarter notes. Measure 14 contains a half note followed by two quarter notes. Measure 15 contains a quarter note followed by two quarter notes. Measure 16 contains a half note followed by two quarter notes.

**E**

Rhythm drill E consists of four measures. Measure 17 starts with a common time signature (C) and contains a quarter note followed by two quarter notes. Measure 18 contains a quarter note followed by two quarter notes. Measure 19 contains a quarter note followed by two quarter notes. Measure 20 contains a half note followed by two quarter notes.

**F**

Rhythm drill F consists of four measures. Measure 21 starts with a common time signature (C) and contains four quarter notes. Measure 22 contains a quarter note followed by two quarter notes. Measure 23 contains a quarter note followed by two quarter notes. Measure 24 contains a quarter note followed by two quarter notes.



# 17

## Rhythm Drills

### Sixteenth note patterns

$\text{♩} = 70$

**A** Set a metronome so that you play with a steady beat.

1 2 3 4

**B**

5 6 7 8

**C**

9 10 11 12

**D**

13 14 15 16

**E**

17 18 19 20

**F**

21 22 23 24

## Rhythm Drills

## Compound Meter

In compound meter, the eighth notes get grouped in groups of 2s and 3s.

**A** ♩=180 Here is 3+2+2:



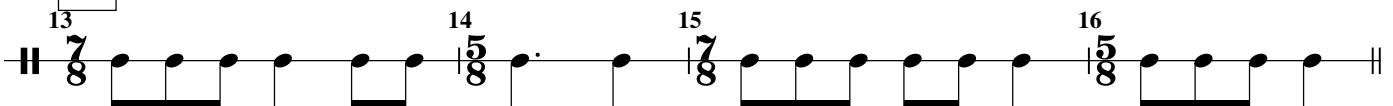
**B** Here is 2+2+3:



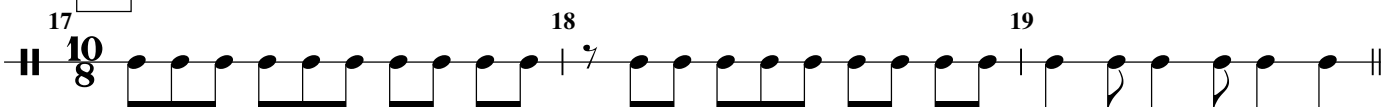
**C** Sometimes, the pattern will change back and forth:



**D** Sometimes, the time signature will change too:



**E**



**F**

